

Uniformed & Predictable Breeding

Understanding the capabilities of the merino is the key to consistent and predictable breeding. David Ridgway believes it is always essential to visually assess an animal only using measured traits as a tool. The Stud does not chase industry fads, but concentrates on breeding animals that they firmly believe is the right direction for their own merino enterprise & for their clients to continually achieve sustainable profits. Fertility with lambs on the ground, white quality fibre that displays staple length, carcase, structure and conformation all-important aspects of the Advance poll merino. This balanced approach enables merinos to adapt well in all environments and reproduce at high levels while competing well in both markets.

‘Making sure there is a Genuine **BALANCE** in their stocks production and performance’



The **Ridgway Advance Poll Merino Stud** is situated in the South-East of SA., 20 - 30 km north of Bordertown, neighboring the Victorian border with an annual rainfall of 450 mm

Annual Ram Sale

Wednesday 16th August 17

All Rams individually penned with Current Wool tests, EMD Fat & Weights Displayed.

Pedigree Information Available

INSPECTION 9:30 AM / SALE 1pm

MN3-V & brucellosis accredited

David offers complimentary flock classing.

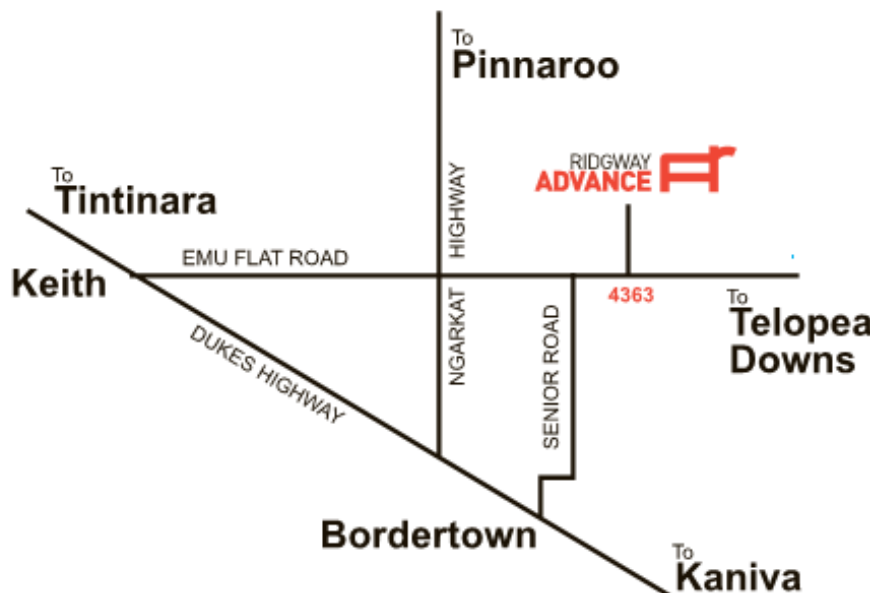
David & Karen Ridgway

08 87542028 / 0409 408 263

4363 Emu flat rd., Senior SA 5268

ridgwayadvance@activ8.net.au

www.ridgwayadvancemerinos.com.au



RIDGWAY ADVANCE



Striking the
CORRECT BALANCE



RAM SALE BORDERTOWN **WEDNESDAY 16th AUGUST '17**

Correctly Balancing all Attributes needed in a Dual Purpose Merino

BALANCED APPROACH

Quality Wool Fibre

and

Never comprising, the number one
profit driver

Early Meat Development

High Reproduction Rates



'The IMPORTANCE of BALANCE & CONSISTENCY within the genetic line.'

*Breeding principals have always
been to co-ordinate high
reproduction with the maximizing of
meat and quality fibre production.*

The Advance sheep have been developing
over the past three decades and are now
an Impacting genotype that has depth,
resulting in predictable breeding.

Stud principle, David, Karen & Devon
Ridgway believes **"When it comes to
Merinos it is a matter of striking the
correct Balance"**

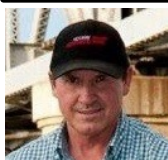
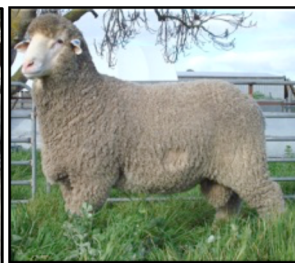
With properly planned joining programs and
pedigree selection Ridgway Advance have
created a Poll Merino that breeds
predictable and of an even type, capable of
adapting in all conditions.

The Advance sheep display great shape
and correct structure with impressive meat
traits complemented with white,
deep-crimped and well-aligned fibre that
grows at a rapid rate.

A key component of the Ridgway Advance
Merino is their plain supple & highly
productive skin that allows for a robust
animal with great carcass attributes to
produce long, soft white wool.

The stud's sheep are well-known for their
ability to reproduce at very high rates and
with their distinctive carcass conformation,
the stock are rewarding commercial clients
with their bottom line.

This is highlighted in several SA & Victorian
renowned ewe sales, wool auctions and
lambs processed over hooks that have
continually achieved outstanding results.



You are invited to the Ridgway Advance Annual On-Property Inspection & Ram Sale on
Wednesday, 16th of August to view the quality and depth of this years sale team. (lunch provided)

Enquires & Inspections Welcome David Ridgway 08 87542028 0409 408 263

Catalogues can be posted or emailed on request

Email: ridgwayadvance@activ8.net.au



MN3-V & Brucellosis accredited
since 2002