



**DAVID, KAREN & DEVON RIDGWAY**

---

# **' RIDGWAY ADVANCE '**

**Perfectly Balanced Merino's**



**Reserved for the Classing Classic Ram Sale  
4th September 2017 Murray Bridge, SA**

08 8754 2028 / 0409 408 263    [ridgwayadvance@activ8.net.au](mailto:ridgwayadvance@activ8.net.au)  
[www.ridgwayadvancemerinos.com.au](http://www.ridgwayadvancemerinos.com.au)

***OJD MN3 V & Brucellosis Accredited***

**Y 095** - Is a deep heavy bodied ram that produces ultra white fibre of outstanding quality. Very strong in the head and muzzle.

One of 5 brothers that were used in a ram lamb syndicate sired by RA 202.

**Y 017** - Very powerful ram. Great head, very pure and has good width. Definitely an outstanding all rounder.



Tag	Sire	Age	Micron	S.D.	C.V.	C.F.%	EMD	Fat
Y 095	RA 202	M/June	18.7	2.4	12.8	99.9	44	5
Y 017	RA 202	M/June	19.1	2.8	14.5	99.6	43	5



**W 325**

W 325 - Big heavy ram with very white nourished wool. He and his brothers (Y 428 and W 321) were also used in a RA 080 ram lamb syndicate joining.

Tag	Sire	Age	Micron	S.D.	C.V.	C.F.%	EMD	Fat
W 325	RA 080	April	19.3	2.6	13.5	99.7	45	5
Y 428	RA 080	M/June	20.2	3.0	14.9	99.8	44	5

**Y 428**

Y 428 - Production is the word to describe this ram. Big chest and barrel. He carries a bulky, long stapled stylish fleece.

**B 001**



# Spring Drops

B 001 - An extremely long bodied ram who extends his neck vertically. Has good width across his chest and rump. Grows a rich lustrous fibre of the highest quality.

Tag	Sire	Age	Micron	S.D.	C.V.	C.F.%
B 001	RA 082	S/Oct	18.2	2.7	14.8	99.8
B 006	RA 082	S/Oct	17.4	2.8	16.4	99.8

B 006 - Very growthy for his age. A typical RA 082. Tremendous body length with a proud distinctive appearance.

**B 006**





# Spring Drops

Or 021 - Is a ram with two generations of et breeding and it shows.

A proud young sire that is very photogenic. He has a rich white wool which has carried on from both side of his breeding. His mother is an et bred ewe from RA 532 who incidentally bred top sire RA 080.

Or 021



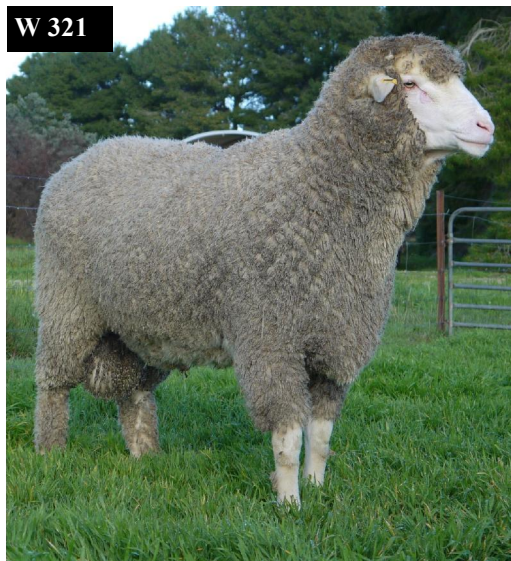
Tag	Sire	Age	Micron	S.D.	C.V.	C.F.%
Or 021	W 445	S/Oct	18.6	3.3	17.9	99.4
B 025	W 445	Nov	18.0	2.8	15.8	99.8

B 025



B 025 - This young November drop ram has good fibre density. Adding to this is a body with width and depth. Showing early muscle development.

W 321



W 321 - A tall stretchy ram with fantastic fibre. Very similar to his father RA 080.

W 354



W 354 - A ram that will produce early maturing lambs. Tremendous width and bulky bold crimping wool.

Y 074



Y 074 - Very attractive young size. Outstanding conformation producing top end BD, EMD and FAT scores.

Tag	Sire	Age	Micron	S.D.	C.V.	C.F.%	EMD	Fat
W 321	RA 080	April	18.6	2.4	12.9	99.9	45	6
W 354	G 007	April	19.3	2.8	14.3	99.8	45	5
Y 074	RA 080	M/June	20.6	3.0	14.5	99.2	45	7



Y 105

Y 105 - Yet another son of RA 202. Carries all the same characteristics of his brothers. Great conformation with exquisite purity.



Y 066



Y 066 - Very deep wide and heavy carcass with the most extreme long white wool. Needs to be seen to be believed how long his fibre is.

Tag	Sire	Age	Micron	S.D.	C.V.	C.F.%	EMD	Fat
Y 105	RA 202	M/June	20.5	3.3	16.0	99.6	42	5
Y 066	RA 080	M/June	18.9	2.8	14.8	99.6	44	5

**W 402****Y 091**

Y 091 - Is a tall long bodied ram displaying a rich white bold wool.

W 402 - Correct solid ram carrying an extreme elite nourished medium wool.

W 422 - Attractive well-balanced sire highlighted with a strong powerful head. Will fill bales with white long crimpy wool.

A further 6 commercial rams to be offered at the classic.

**W 422**

Tag	Sire	Age	Micron	S.D.	C.V.	C.F.%	EMD	Fat
W 402	RA 120	April	17.5	2.6	15.2	100	40	7
Y 091	RA 202	M/June	18.3	2.6	14.0	99.9	43	5
W 422	RA 120	April	20.7	3.0	14.4	99.6	45	6

Regulation Autumn Shorn - Stud Retains 50% Semen Marketing Rights

