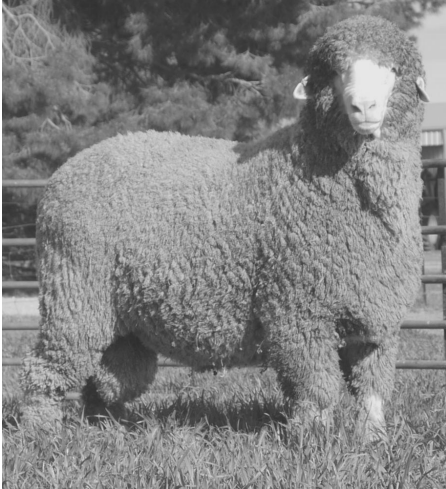


# RIDGWAY ADVANCE

Balanced Poll Merino's



**2019 Auction Catalogue**  
**WEDNESDAY 14<sup>th</sup> AUGUST**  
**BORDERTOWN, SA**

**INSPECTION starts at 9.30 am**  
**AUCTION 1.00 PM (SA time)**

***David, Karen & Devon RIDGWAY***

**08) 87542028 ph/Fax 0409 408 263 mobile**

**4363 Emu Flat Rd., Senior, Bordertown, SA. 5268**



**OJD MN3 - V Status & Brucellosis Accredited**



PEN	TAG	AGE mths	SIRE	MIC	S.D.	C.V.	C.F.	EMD	FAT	WGT
<b>1</b>	Y 399	M/June	RA 022 RLS	19.0	2.6	13.4	99.8	39	11	124
<b>2</b> ET	R 442	April	RA095	18.1	2.1	11.6	99.9	44	8	112
<b>3</b> ET	R 488	April	RA090	17.0	2.3	13.5	99.6	39	7	113
<b>4</b> ET	B 077	April	RA002	20.3	2.5	12.3	99.9	39	5	113
<b>5</b> ET	R 479	April	RA090	19.2	2.7	14.1	99.5	41	8	113
<b>6</b>	Y 457	M/June	RA080	19.1	2.7	14.3	100	42	6	109
<b>7</b> ET	B 037	April	RA024	19.0	2.6	13.7	99.8	36	5	111
<b>8</b>	W209	April	PB1923	20.0	2.9	14.4	99.4	43	6	103
<b>9</b>	Y 255	M/June	RA090	18.8	3.1	16.5	99.5	36	6	106
<b>10</b>	W162	April	G 257	18.9	3.6	19.0	99.6	42	6	104
<b>11</b>	Y 402	M/June	G 257	19.5	2.9	14.9	99.8	36	5	99
<b>12</b>	Y 374	M/June	RA080	18.8	3.1	16.2	99.2	44	9	101

PEN	TAG	AGE mths	SIRE	MIC	S.D.	C.V.	C.F.	EMD	FAT	WGT
<b>13</b>	W069	April	RA017	18.4	2.7	14.4	99.6	40	8	103
<b>14</b>	W015	April	RA090	20.1	2.9	14.5	99.4	42	7	100
<b>15</b>	Y 370	M/June	RA 002 RLS	17.5	2.2	12.6	99.7	42	6	102
<b>16</b>	W005	April	RA090	18.8	3.0	15.8	100	43	6	99
<b>17</b>	W050	April	RA095	19.0	2.9	15.0	99.8	38	7	97
<b>SPRING DROPS</b>										
<b>18</b> ET	B 044	S/Oct	RA024	18.6	3.6	19.8	99.8	40	6	93
<b>19</b>	Or548	S/Oct	RA082	17.1	2.8	16.1	99.8	36	6	92
<b>20</b>	Or525	S/Oct	RA001	17.5	2.5	14.1	99.9	39	6	95
<b>21</b>	Or561	S/Oct	RA024	17.2	3.4	19.8	99.6	38	5	89
<b>22</b>	Or524	S/Oct	RA001	16.8	2.9	17.0	99.6	40	5	88
<b>23</b>	Or513	S/Oct	RA090	17.8	2.8	15.9	99.8	38	7	87

PEN	TAG	AGE mths	SIRE	MIC	S.D.	C.V.	C.F.	EMD	FAT	WGT
24	Or588	S/Oct	WOOD 445	18.6	3.2	17.4	99.4	37	8	100
25	Or502	S/Oct	RA090	16.7	2.7	16.2	99.8	38	6	90
<b>April/May/June Drop</b>										
26	W105	April	RA001	18.9	2.9	15.5	99.6	38	7	96
27 ET	B 089	April	RA002	18.5	2.7	14.6	99.6	35	5	95
28	W161	April	G 257	18.9	3.1	16.2	99.2	41	6	101
29	Y 372	M/June	RA 002 RLS	19.2	3.5	18.2	99.2	37	6	99
30	W152	April	RA021	18.6	2.5	13.3	100	39	6	99
31	W029	April	RA090	17.5	2.8	15.7	99.6	40	8	103
32	Y 396	M/June	RA 022 RLS	20.2	2.7	13.5	99.8	38	7	105
33 ET	B 097	April	RA002	18.3	2.7	14.9	99.4	41	6	108
34	W061	April	RA017	19.7	3.1	15.7	99.6	45	10	121

PEN	TAG	AGE mths	SIRE	MIC	S.D.	C.V.	C.F.	EMD	FAT	WGT
<b>35</b>	Y 307	M/June	RA202	20.3	3.1	15.3	99.6	39	6	103
<b>36</b>	Y 354	M/June	RA 100 RLS	16.9	3.2	18.7	99.8	38	9	113
<b>37</b>	W112	April	RA006	18.4	3.1	17.0	99.8	42	6	110
<b>38</b>	Y353	M/June	RA 100 RLS	18.6	3.7	20.1	99.4	42	7	108
<b>39</b>	W115	April	RA006	19.3	3.1	15.8	99.8	45	7	99
<b>40</b>	Y 394	M/June	RA 022 RLS	19.1	3.4	17.6	99.2	42	6	99
<b>41</b>	W020	April	RA090	18.9	3.6	19.1	99.4	44	6	101
<b>42</b>	W148	April	RA021	20.3	2.9	14.3	99.9	46	7	107
<b>SPRING DROPS</b>										
<b>43</b>	Or506	S/Oct	RA090	16.8	2.9	17.0	99.6	39	6	99
<b>44</b>	Or590	S/Oct	PB1923	18.1	3.0	16.8	99.6	37	7	98
<b>45</b>	Or505	S/Oct	RA090	19.9	3.1	15.7	99.6	37	6	87

<b>PEN</b>	<b>TAG</b>	<b>AGE</b> mths	<b>SIRE</b>	<b>MIC</b>	<b>S.D.</b>	<b>C.V.</b>	<b>C.F.</b>	<b>EMD</b>	<b>FAT</b>	<b>WGT</b>
<b>46</b>	Or520	S/Oct	RA001	19.4	2.9	15.2	99.6	36	7	89
<b>47</b>	Or560	S/Oct	RA024	16.4	2.7	16.5	99.8	37	9	94
<b>48</b>	Or508	S/Oct	RA090	18.0	2.7	14.8	99.6	42	6	87
<b>49</b>	Or510	S/Oct	RA090	19.3	2.8	14.5	99.8	35	6	85
<b>50</b>	Or545	S/Oct	RA082	17.6	2.5	14.0	99.8	41	6	93

## APRIL/MAY/JUNE DROPS

<b>51</b>	W155	April	RA021	19.8	2.7	13.6	100	38	8	96
<b>52</b>	W125	April	RA006	18.1	2.8	15.6	99.6	39	8	99
<b>53</b>	Y 299	M/June	RA202	18.5	2.6	14.1	99.8	37	7	97
<b>54</b>	W011	April	RA090	17.3	2.9	16.6	99.2	36	6	94
<b>55</b>	Y 350	M/June	RA 100 RLS	18.6	3.2	17.3	99.4	37	7	104
<b>56</b>	W118	April	RA006	17.6	2.8	16.1	99.6	37	7	95

PEN	TAG	AGE mths	SIRE	MIC	S.D.	C.V.	C.F.	EMD	FAT	WGT
<b>57</b>	Y 371	M/June	RA 002 RLS	19.9	3.1	15.5	99.8	44	5	100
<b>58</b>	W027	April	RA090	20.2	3.8	18.6	99.6	41	7	94
<b>59</b>	Y 344	M/June	RA001	20.0	3.2	16.1	99.4	42	6	101
<b>60</b>	W147	April	RA021	19.7	3.3	16.7	100	38	8	95
<b>61</b>	Y 456	M/June	RA080	19.9	3.7	18.6	99.0	41	7	107
<b>62</b>	Y 445	M/June	RA082	17.7	3.1	17.5	99.6	40	7	99
<b>63</b> ET	R 451	April	RA095	18.8	2.6	13.8	100	36	5	99
<b>64</b>	W111	April	RA006	18.5	3.0	16.3	99.6	39	9	113
<b>65</b>	Y 369	M/June	G 257	19.5	3.1	15.9	99.4	39	7	109
<b>66</b>	W102	April	RA001	17.0	2.8	16.6	99.8	45	9	111
<b>67</b> ET	R 440	April	RA095	18.9	3.0	16.1	99.0	41	7	102
<b>68</b>	Y 404	M/June	G 257	20.2	3.4	16.9	99.4	38	8	101

<b>PEN</b>	<b>TAG</b>	<b>AGE</b> mths	<b>SIRE</b>	<b>MIC</b>	<b>S.D.</b>	<b>C.V.</b>	<b>C.F.</b>	<b>EMD</b>	<b>FAT</b>	<b>WGT</b>
<b>69</b>	W009	April	RA090	18.3	2.6	14.1	100	43	7	97
<b>70</b>	W121	April	RA006	18.9	3.5	18.3	99.6	41	7	108
<b>71</b>	Y 443	M/June	RA082	18.4	2.8	15.4	99.6	38	5	102
<b>72</b>	W058	April	RA095	17.7	2.8	15.8	99.9	41	5	102
<b>73</b>	Y455	M/June	RA080	18.7	3.0	16.2	99.4	35	7	103
<b>74</b>	W014	April	RA090	16.8	3.2	18.8	99.4	39	7	92
<b>75</b>	W110	April	RA006	18.4	2.5	13.8	100	39	7	98
<b>SPRING DROPS</b>										
<b>76</b>	Or600	S/Oct	RA syn	19.1	3.3	17.2	99.4	38	6	94
<b>77</b>	Or507	S/Oct	RA090	18.1	2.7	15.2	99.6	36	5	91
<b>78</b> ET	B 060	S/Oct	RA024	18.9	3.4	18.1	99.2	35	7	91
<b>79</b>	Or592	S/Oct	PB1923	19.1	2.6	13.6	99.8	36	5	86



PEN	TAG	AGE mths	SIRE	MIC	S.D.	C.V.	C.F.	EMD	FAT	WGT
<b>80</b>	Or589	S/Oct	WOOD 445	17.1	2.6	15.4	99.6	41	6	99
<b>81</b>	Or584	S/Oct	WOOD 445	18.0	2.8	15.8	99.6	39	6	89
<b>82</b>	Or549	S/Oct	RA082	18.2	2.2	12.1	100	38	5	87
<b>83</b>	Or563	S/Oct	RA024	16.6	2.0	12.3	100	35	5	86

## APRIL/MAY/JUNE DROPS

<b>84</b>	W063	April	RA017	19.6	2.7	13.7	99.8	42	7	94
<b>85</b>	Y 346	July	RA001	20.4	2.7	13.4	99.4	37	5	92
<b>86</b>	Y 499	July	RA syn	18.5	2.7	14.7	99.6	40	7	91
<b>87</b>	W157	April	RA021	20.7	3.2	15.5	99.4	41	6	94
<b>88</b>	W018	April	RA090	19.5	3.5	18.2	99.0	37	7	92
<b>89</b>	W204	April	PB1923	17.4	3.4	19.7	99.2	41	6	97
<b>90</b>	W071	April	RA017	18.6	3.2	17.1	99.4	40	6	98

PEN	TAG	AGE mths	SIRE	MIC	S.D.	C.V.	C.F.	EMD	FAT	WGT
<b>91</b>	Y 460	M/June	RA080	20.3	3.1	15.0	99.8	37	6	97
<b>92</b>	W101	April	RA001	18.8	2.7	14.4	99.8	39	8	103
<b>93</b>	W103	April	RA001	19.6	3.6	18.2	99.0	38	6	103
<b>94</b> ET	R 466	April	RA090	17.6	2.5	14.0	100	39	6	104
<b>95</b>	W122	April	RA006	19.5	3.8	19.6	99.2	44	9	113
<b>96</b>	W205	April	PB1923	17.4	3.3	18.9	99.2	41	7	103
<b>97</b>	W149	April	RA021	20.1	3.6	17.8	99.6	43	8	107
<b>98</b>	W067	April	RA017	20.0	3.3	16.6	99.0	44	9	111
<b>99</b>	W203	April	PB1923	19.1	3.1	16.2	99.6	40	7	104
<b>100</b> ET	B 088	April	RA002	21.1	2.7	12.9	99.4	39	7	110
<b>101</b> ET	B 098	April	RA002	21.6	3.9	18.0	98.2	38	6	113
<b>102</b>	Y 302	M/June	RA202	19.9	3.7	18.9	99.6	43	7	106

PEN	TAG	AGE mths	SIRE	MIC	S.D.	C.V.	C.F.	EMD	FAT	WGT
<b>103</b>	W108	April	RA001	19.7	3.1	15.6	99.2	44	7	110
<b>104</b>	W002	April	RA090	21.2	2.9	13.7	99.6	37	6	98
<b>105</b> ET	R 469	April	RA090	18.3	2.5	13.8	99.6	36	6	109
<b>106</b>	W056	April	RA095	18.4	2.9	15.6	99.6	40	8	101
<b>107</b>	W070	April	RA017	19.7	2.8	14.2	99.6	40	6	101
<b>108</b>	W010	April	RA090	17.8	2.7	15.2	99.6	41	8	108
<b>109</b>	W154	April	RA021	19.2	2.6	13.7	99.8	45	7	108
<b>110</b>	Y 308	M/June	RA202	19.0	3.3	17.2	99.4	42	6	102
<b>111</b>	Y 375	M/June	RA 002 RLS	18.2	2.8	15.4	100	37	6	97
<b>112</b>	Y 347	M/June	RA001	19.6	3.4	17.3	99.4	40	7	95
<b>113</b>	Y 264	July	RA090	16.6	3.1	18.4	99.8	38	7	93
<b>114</b>	W106	April	RA001	19.1	2.9	15.0	99.4	33	5	93

PEN	TAG	AGE mths	SIRE	MIC	S.D.	C.V.	C.F.	EMD	FAT	WGT
<b>115</b>	Y 259	M/June	RA090	17.0	2.3	13.4	99.8	38	6	102
<b>116</b>	W207	April	PB1923	19.8	3.6	18.2	99.4	43	6	93
<b>117</b>	Y 298	M/June	RA202	18.2	2.8	15.4	99.6	38	6	106
<b>118</b>	W052	April	RA095	17.1	2.5	14.5	99.8	37	6	100
<b>119</b>	Y 464	M/June	RA080	18.4	2.7	14.8	99.8	43	7	109
<b>120</b>	W016	April	RA090	16.4	3.0	18.1	99.8	40	6	98
<b>121</b>	Y 260	M/June	RA090	17.7	2.2	12.5	99.8	38	6	99
<b>122</b>	W124	April	RA006	17.3	3.1	18.0	100	42	7	109
<b>123</b>	Y 446	M/June	RA082	17.6	3.0	17.2	99.2	37	5	101
<b>124</b>	W119	April	RA006	20.9	4.0	19.0	98.4	39	8	116
<b>125</b>	W054	April	RA095	19.6	3.3	17.0	99.8	39	7	108
<b>126</b>	W120	April	RA006	18.7	3.6	19.0	99.2	38	8	112

<b>PEN</b>	<b>TAG</b>	<b>AGE</b> mths	<b>SIRE</b>	<b>MIC</b>	<b>S.D.</b>	<b>C.V.</b>	<b>C.F.</b>	<b>EMD</b>	<b>FAT</b>	<b>WGT</b>
<b>127</b>	W123	April	RA006	20.5	3.3	15.9	99.6	41	9	117
<b>128</b>	Y 263	M/June	RA090	16.3	2.4	14.6	100	40	6	106
<b>129</b>	Y 459	M/June	RA080	20.2	3.2	15.7	99.2	39	8	102
<b>130</b>	W003	April	RA090	19.2	2.9	15.3	99.4	37	6	91

## SPRING DROPS

<b>131</b>	Or544	S/Oct	RA082	17.9	2.8	15.4	99.8	41	7	97
<b>132</b>	Or529	S/Oct	RA001	17.9	2.9	16.2	99.4	34	6	91
<b>133</b>	Or514	S/Oct	RA090	16.8	2.4	14.4	100	37	6	91
<b>134</b>	Or583	S/Oct	WOOD 445	18.7	2.6	14.1	99.6	36	6	84
<b>135</b>	Or551	S/Oct	RA080	18.4	2.8	15.1	99.8	38	6	85
<b>136</b>	Or519	S/Oct	RA202	18.8	2.8	14.7	99.8	34	5	87

## APRIL/MAY/JUNE DROPS

PEN	TAG	AGE mths	SIRE	MIC	S.D.	C.V.	C.F.	EMD	FAT	WGT
<b>137</b>	Y 452	July	RA080	18.6	2.9	15.8	99.8	39	7	93
<b>138</b>	Y461	July	RA080	19.1	3.6	18.7	99.0	34	7	97
<b>139</b>	Y 306	July	RA202	18.2	3.3	18.4	100	41	7	94
<b>140</b>	Y373	M/June	RA 002 RLS	17.1	2.6	15.3	99.4	41	6	105
<b>141</b>	Y 449	M/June	RA082	18.2	2.6	14.3	99.8	38	5	91
<b>142</b>	W024	April	RA090	19.1	3.2	16.8	99.0	40	6	99
<b>143</b> HORN	Y 376	M/June	RA 002 RLS	18.5	3.0	16.0	99.6	36	5	95
<b>144</b>	W104	April	RA001	17.1	3.0	17.8	99.2	42	8	102
<b>145</b>	W008	April	RA090	18.8	2.9	15.3	99.6	37	6	98
<b>146</b> ET	B 038	April	RA024	17.6	3.1	17.6	99.8	40	6	105
<b>147</b>	Y 305	M/June	RA202	19.6	3.5	17.8	99.4	41	7	110
<b>148</b>	W031	April	RA090	17.6	3.1	17.6	99.6	39	7	102

PEN	TAG	AGE mths	SIRE	MIC	S.D.	C.V.	C.F.	EMD	FAT	WGT
<b>149</b>	W064	April	RA017	18.4	2.6	14.0	100	40	7	114
<b>150</b>	W019	April	RA090	19.5	4.1	20.9	98.4	36	7	95
<b>151</b>	Y 300	M/June	RA202	18.9	3.0	16.0	99.4	35	6	95
<b>152</b>	Y 261	M/June	RA090	19.1	3.2	16.9	99.2	41	5	101
<b>153</b>	Y 349	M/June	RA001	17.1	2.9	17.1	99.8	41	6	107
<b>154</b>	W114	April	RA006	17.5	3.2	18.4	99.4	38	7	96
<b>155</b>	W023	April	RA090	17.3	2.6	14.8	99.6	42	7	92
<b>156</b>	W021	April	RA090	18.8	3.6	19.0	98.8	36	6	95
<b>157</b>	W013	April	RA090	19.9	2.7	13.5	99.8	37	7	90
<b>158</b>	Y 463	July	RA080	17.8	3.0	16.9	99.2	37	10	96
<b>159</b>	Y 343	July	RA001	19.9	3.4	16.9	99.6	37	7	90
<b>160</b>	Y 315	M/June	RA 202 RLS	17.9	2.9	16.0	99.6	37	7	100

PEN	TAG	AGE mths	SIRE	MIC	S.D.	C.V.	C.F.	EMD	FAT	WGT
<b>161</b>	Y 352	M/June	RA 100 RLS	17.9	2.9	16.2	99.8	40	6	96
<b>162</b>	Y 467	M/June	RA080	20.4	3.3	16.3	99.0	45	7	107
<b>163</b>	W117	April	RA006	17.7	2.9	16.5	100	39	7	93
<b>164</b>	Y 314	M/June	RA 202 RLS	18.5	3.1	16.8	99.2	40	8	99
<b>165</b>	W051	April	RA095	18.4	3.1	17.0	99.2	38	7	104
<b>166</b>	W211	April	RA syn	18.4	3.1	17.0	99.8	36	7	100
<b>167</b>	W100	April	RA001	19.1	3.0	15.9	99.4	43	7	100
<b>168</b>	W072	April	RA017	18.6	2.9	15.6	99.8	40	10	105

**ALL RAMS REGULATION AUTUMN SHORN 2019**

**ALL SALE RAMS**

**CURRENT WOOL TESTS, WEIGHT, EYE MUSCLE & FAT SCORES**

**Ridgway Advance policy is to retain 50% semen rights On all rams sold**

**NOTE DIFFERENT AGES OF RAMS - DROPPED 2018**

INSPECTION & MORNING TEA FROM 9.30 AM / AUCTION 1.00 PM START (LUNCH PROVIDED)

Email: [ridgwayadvance@activ8.net.au](mailto:ridgwayadvance@activ8.net.au)

Web site : [www.ridgwayadvancemerinos.com.au](http://www.ridgwayadvancemerinos.com.au)

Ram delivery & complimentary classing can be organized on request.  
Thankyou for your support