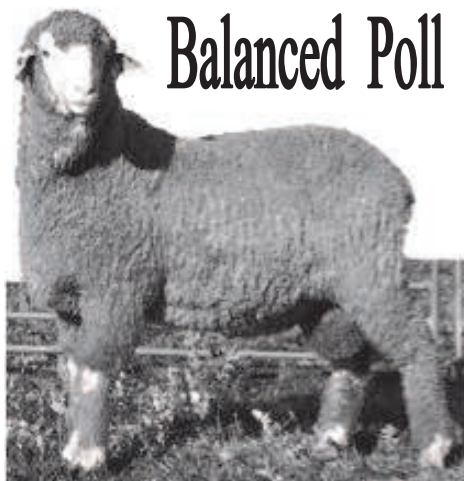


# **RIDGWAY ADVANCE**

Balanced Poll Merino's



2016 Auction Catalogue

*WEDNESDAY 10<sup>th</sup> AUGUST*

BORDERTOWN, SA

INSPECTION starts at 9.30 am

AUCTION 1.00 PM (SA time)

*DAVID & KAREN RIDGWAY*

08) 87542028 ph/Fax 0409 408 263 mobile

4363 Emu Flat Rd., Senior, Bordertown, SA. 5268



OJD MN3 - V Status & Brucellosis Accredited



PEN	TAG	AGE mths	SIRE	MIC	S.D.	C.V.	C.F.	EMD	FAT	WGT
<b>1</b>	Y152	M/June	RA252	18.6	3.0	16.4	99.6	39	7	104
<b>2</b>	Y177	M/June	RLS	17.9	3.1	17.5	99.2	42	6	109
<b>3</b>	Y130	M/June	WP156	21.0	3.0	14.3	99.8	44	6	111
<b>4</b>	Y198	M/June	RLS	19.3	3.2	16.7	99.8	40	7	119
<b>5</b>	Y196	M/June	RLS	18.6	2.9	15.4	99.6	39	7	102
<b>6</b>	W042	April	RA060	19.9	3.1	15.4	99.6	38	5	103
<b>7</b>	W044	April	RA060	19.1	3.0	15.7	99.8	38	6	104
<b>8</b>	Y002	M/June	RA080	19.8	3.2	16.1	99.6	42	6	101
<b>9</b>	R039	M/June	RA080	19.7	2.5	12.6	99.8	38	7	108
<b>10</b>	Y055	M/June	RA026	18.5	2.5	13.7	99.2	38	6	98
<b>11</b>	Y044	M/June	RA026	18.6	2.4	12.9	99.7	40	6	100
<b>12</b>	W110	April	RA003	17.5	2.7	15.6	100	41	6	97

PEN	TAG	AGE mths	SIRE	MIC	S.D.	C.V.	C.F.	EMD	FAT	WGT
<b>13</b>	W145	April	RA100	18.2	2.7	15.1	99.6	40	5	103
<b>14</b>	W066	April	WP8	20.9	3.2	15.4	99.2	43	6	100
<b>15</b>	R 027	M/June	RA080	19.6	2.7	13.7	99.6	42	8	101
<b>16</b>	W102	April	RA003	17.5	3.0	17.4	99.4	39	7	95
<b>17</b>	W018	April	RA080	19.1	2.6	13.4	100	40	6	95
<b>18</b>	Y155	M/June	RA252	17.3	3.0	17.2	99.6	40	6	103
<b>19</b>	W006	April	RA080	17.9	3.1	17.3	99.8	41	7	97
<b>20</b>	Y190	M/June	RLS	18.5	2.5	13.7	99.8	39	8	98
<b>21</b>	Y185	M/June	RLS	18.6	2.8	15.1	99.6	39	6	101
<b>22</b>	W009	April	RA080	18.8	2.7	14.5	99.6	44	6	101
<b>23</b>	Y175	M/June	RLS	18.8	2.9	15.6	99.4	40	7	96
<b>24</b>	W002	April	RA080	19.6	2.7	13.8	99.7	39	7	98

PEN	TAG	AGE mths	SIRE	MIC	S.D.	C.V.	C.F.	EMD	FAT	WGT
<b>25</b>	W108	April	RA003	18.5	2.6	13.8	99.4	39	6	105
<b>26</b>	Y105	M/June	RA082	17.1	2.4	14.0	100	39	5	100
<b>27</b>	W045	April	RA60	18.1	2.8	15.5	99.6	39	5	102
<b>28</b>	R026	M/June	RA080	20.9	2.9	13.8	99.4	40	5	96
<b>29</b>	W046	April	RA060	17.3	2.9	16.5	99.6	38	6	98
<b>30</b>	Y027	M/June	RA080	19.5	2.7	13.8	99.8	40	6	109
<b>31</b>	Y118	M/June	WP156	18.7	2.2	16.9	99.8	40	6	107
<b>32</b>	W101	April	RA003	20.5	2.9	13.9	99.4	41	6	104
<b>33</b>	W148	April	RA100	19.3	2.8	14.7	99.6	41	8	103
<b>34</b>	Y097	M/June	RA082	17.9	3.0	16.9	99.2	39	7	101
<b>35</b>	Y193	M/June	RLS	17.6	3.2	18.4	99.2	44	8	115
<b>36</b>	Y146	M/June	RLS	16.9	2.8	16.8	99.8	39	6	107

PEN	TAG	AGE mths	SIRE	MIC	S.D.	C.V.	C.F.	EMD	FAT	WGT
<b>37</b>	W007	April	RA080	20.8	2.9	13.9	99.4	38	6	100
<b>38</b>	Y099	M/June	RA082	17.1	2.9	16.7	99.8	42	6	109
<b>39</b>	Y199	M/June	RLS	18.6	2.3	12.6	99.8	38	5	101
<b>40</b>	W126	April	GP891	19.6	3.0	15.3	99.7	41	5	97
<b>41</b>	Y120	M/June	WP156	19.3	2.5	12.9	99.6	43	7	105
<b>42</b>	Y045	M/June	RA026	17.2	2.6	15.1	99.6	37	6	98
<b>SPRING DROPS</b>										
<b>43</b> Spring	Or025	Sept	RA026	17.4	2.2	12.6	100	33	5	90
<b>44</b> Spring	Or024	Sept	RAS	18.4	2.5	13.3	100	33	5	86
<b>45</b> Spring	Or013	Sept	RA082	18.6	2.4	13.1	99.8	35	6	84
<b>46</b> Spring	Or011	Sept	RA082	19.3	3.1	15.9	99.2	37	7	99
<b>47</b> Spring	Or027	Sept	RA082	17.3	2.2	12.5	100	36	6	80

PEN	TAG	AGE mths	SIRE	MIC	S.D.	C.V.	C.F.	EMD	FAT	WGT
<b>48</b> Spring	Or037	Sept	Holy	17.9	2.9	16.4	99.8	38	5	83
<b>49</b> Spring	Or036	Sept	Holy	16.3	2.5	15.1	100	37	6	82
<b>50</b> Spring	Or014	Sept	RA082	17.4	2.6	15.1	99.8	34	5	88
<b>51</b>	Y011	M/June	RA080	18.4	2.8	15.4	99.4	36	5	96
<b>52</b>	Y101	M/June	RA082	17.9	2.4	13.2	99.8	38	6	94
<b>53</b>	Y052	M/June	RA026	17.9	2.4	13.5	99.8	39	8	96
<b>54</b>	Y021	M/June	RA080	19.8	2.9	14.5	99.8	40	6	92
<b>55</b>	W011	April	RA080	17.4	2.7	15.3	99.8	37	7	95
<b>56</b>	Y122	M/June	WP156	19.2	2.6	13.8	99.8	42	7	102
<b>57</b>	Y178	M/June	RA082	18.3	3.0	16.3	99.4	37	6	94
<b>58</b>	W093	April	RA086	18.3	2.3	12.4	100	38	6	98
<b>59</b>	Y380	M/June	RA082	18.5	2.7	14.5	99.8	39	6	100

PEN	TAG	AGE mths	SIRE	MIC	S.D.	C.V.	C.F.	EMD	FAT	WGT
<b>60</b>	W069	April	WP8	19.7	2.6	13.0	99.8	38	7	100
<b>61</b>	W095	April	GP891	18.1	2.7	15.1	99.6	40	6	99
<b>62</b>	Y012	M/June	RA080	18.6	2.7	14.7	99.2	41	6	96
<b>63</b>	Y180	M/June	RLS	18.9	2.6	13.8	99.9	39	5	99
<b>64</b>	W100	April	RA003	22.5	3.2	14.2	98.5	38	6	102
<b>65</b>	W150	April	RA100	17.0	2.6	15.4	99.8	38	5	112
<b>66</b>	W056	April	RA060	20.0	2.8	13.9	99.0	41	6	103
<b>67</b>	Y108	M/June	RA082	19.8	3.4	17.1	99.0	39	6	109
<b>68</b>	Y109	M/June	RA082	18.4	2.6	14.1	99.8	43	9	104
<b>69</b>	W120	April	GP891	19.1	3.0	15.6	99.8	37	6	99
<b>70</b>	Y050	M/June	RA026	19.1	3.0	15.8	99.6	42	9	104
<b>71</b>	Y053	M/June	RA026	20.6	3.1	15.2	99.0	38	7	94

PEN	TAG	AGE mths	SIRE	MIC	S.D.	C.V.	C.F.	EMD	FAT	WGT
<b>72</b>	W092	April	RA086	20.0	2.9	14.7	99.4	39	7	93
<b>73</b>	W012	April	RA080	21.0	2.9	13.7	99.2	41	7	94
<b>74</b>	Y121	M/June	WP156	19.4	3.3	17.2	99.4	39	8	102
<b>75</b>	Y182	M/June	RLS	20.4	3.2	15.8	99.2	41	6	93
<b>76</b>	Y 005	M/June	RA080	18.0	2.5	13.9	100	39	6	95
<b>77</b>	Y151	M/June	RA252	17.1	2.7	16.0	99.8	36	6	96
<b>78</b>	R037	M/June	RA080	17.2	2.6	14.9	100	41	6	102
<b>79</b>	W015	April	RA080	20.0	3.0	15.2	99.6	40	6	92
<b>80</b>	R076	M/June	RA080	18.5	2.6	13.8	99.8	41	8	96
<b>81</b>	Y031	M/June	RA080	18.5	2.5	13.3	99.6	39	6	96
<b>82</b>	Y062	M/June	WPs	19.7	3.1	15.7	99.2	38	7	97
<b>83</b>	Y096	M/June	RA082	16.3	2.7	16.8	99.6	41	6	95



PEN	TAG	AGE mths	SIRE	MIC	S.D.	C.V.	C.F.	EMD	FAT	WGT
<b>84</b>	W103	April	RA003	19.0	2.6	13.8	99.6	38	7	104
<b>85</b>	W111	April	RA003	19.0	2.9	15.4	99.8	42	6	98
<b>86</b>	Y051	M/June	RA026	17.1	2.5	14.5	99.6	35	5	90
<b>87</b>	W016	April	RA080	20.1	3.1	15.6	99.4	39	7	92
<b>88</b>	Y057	M/June	WPs	19.2	3.0	15.4	99.4	40	6	93
<b>89</b>	Y125	M/June	RA080	19.1	2.5	13.1	99.8	37	5	97
<b>90</b>	Y200	M/June	RLS	19.1	3.5	18.3	98.6	38	7	97
<b>91</b>	Y128	M/June	RA082	17.6	2.5	14.2	99.8	38	7	98
<b>92</b>	W008	April	RA080	18.3	2.7	15.0	99.8	43	7	98
<b>93</b>	R036	M/June	RA080	17.7	2.5	14.4	99.8	40	7	96
<b>94</b>	Y024	M/June	RA080	19.2	3.4	18.0	99.4	38	6	101
<b>95</b>	W149	April	RA100	16.7	2.7	16.2	99.6	40	7	101

PEN	TAG	AGE mths	SIRE	MIC	S.D.	C.V.	C.F.	EMD	FAT	WGT
<b>96</b>	Y029	M/June	RA080	18.5	2.8	15.2	99.8	40	7	96
<b>97</b>	Y056	M/June	WPs	19.5	3.5	17.8	99.4	42	8	106
<b>98</b>	Y183	M/June	RLS	18.1	2.6	14.5	100	37	5	114
<b>99</b>	Y004	M/June	RA080	20.8	2.7	12.9	99.8	43	8	109
<b>100</b>	G090	M/June	GP891	20.0	2.7	13.3	99.6	41	6	113
<i>Please move over to the dome shelter</i>										
<b>101</b>	W049	April	RA060	19.4	3.3	17.2	99.0	40	6	102
<b>102</b>	Y181	M/June	RLS	18.9	2.7	14.3	99.8	42	9	106
<b>103</b>	Y131	M/June	WP156	19.6	3.4	17.5	99.6	42	8	101
<b>104</b>	Y169	M/June	RLS	16.6	2.6	15.8	99.4	40	6	100
<b>105</b>	W097	April	RA086	17.8	2.7	14.9	99.8	37	6	99
<b>106</b>	Y060	M/June	WPs	19.4	2.8	14.6	99.6	35	7	92

PEN	TAG	AGE mths	SIRE	MIC	S.D.	C.V.	C.F.	EMD	FAT	WGT
<b>107</b>	Y030	M/June	RA080	19.1	2.9	15.2	99.0	38	6	92
<b>108</b>	Y129	M/June	WP156	18.5	2.8	15.1	99.6	40	9	92
<b>109</b>	W005	April	RA080	18.0	3.2	17.9	99.2	41	7	89
<b>110</b>	Y058	M/June	WPs	18.4	2.8	15.4	99.4	39	7	96
<b>111</b>	Y018	M/June	RA080	19.7	3.5	17.8	99.4	38	6	89
<b>112</b>	Y025	M/June	RA080	18.7	2.8	15.2	99.8	37	6	88
<b>113</b>	W115	April	RA003	18.1	3.3	18.1	99.2	43	8	97
<b>114</b>	Y010	M/June	RA080	20.6	2.8	13.7	99.2	42	6	92
<b>115</b>	Y168	M/June	RLS	19.5	3.6	18.5	99.4	38	6	90
<b>116</b>	Y026	M/June	RA080	19.3	3.1	16.2	99.2	36	6	89
<b>117</b>	Y013	M/June	RA080	17.4	3.4	19.6	99.0	39	6	93
<b>118</b>	W098	April	RA086	17.6	2.9	16.4	99.6	43	7	99

PEN	TAG	AGE mths	SIRE	MIC	S.D.	C.V.	C.F.	EMD	FAT	WGT
<b>119</b>	Y110	M/June	RA082	17.5	2.7	15.6	100	40	6	96
<b>120</b>	Y126	M/June	WP156	20.6	3.6	17.7	99.0	43	9	110
<b>121</b>	W125	April	GP891	21.1	3.4	15.9	99.4	37	6	103
<b>122</b>	Y088	M/June	RA082	16.8	2.5	15.2	99.8	38	6	95
<b>123</b>	W010	April	RA080	20.6	2.8	13.7	99.2	40	7	107
<b>124</b>	Y194	M/June	RLS	18.1	2.7	14.8	99.8	44	8	102
<b>125</b>	R042	M/June	RA080	18.0	2.6	14.7	99.4	38	6	103
<b>126</b>	Y059	M/June	WPs	19.3	2.6	13.5	99.6	38	8	108
<b>127</b>	Y333	M/June	RLS	17.9	2.6	14.4	99.4	37	8	100
<b>128</b>	W014	April	RA080	18.1	3.5	19.1	99.9	36	7	91
<b>129</b>	Y049	M/June	RA026	16.4	2.6	15.6	99.8	38	5	93
<b>130</b>	Y145	M/June	RAS	19.0	3.2	16.9	99.2	37	7	100

PEN	TAG	AGE mths	SIRE	MIC	S.D.	C.V.	C.F.	EMD	FAT	WGT
<b>131</b> Spring	Or001	Sept	RA080	17.5	2.7	15.4	99.6	33	5	79
<b>132</b> Spring	Or026	Sept	RA026	17.8	2.6	14.6	99.8	40	7	80
<b>133</b> Spring	Or035	Sept	Holy	18.6	3.3	17.8	99.2	38	7	81
<b>134</b> Spring	Or038	Sept	Holy	16.9	2.5	14.9	99.8	37	5	78
<b>135</b> Spring	Or049	Sept	RA252	18.6	2.8	15.2	99.4	38	5	73
<b>136</b> Spring	Or041	Sept	WPs	18.6	2.8	15.1	99.4	34	6	80
<b>137</b> Spring	Or050	Sept	RA252	18.5	3.5	19.1	99.4	31	6	70
<b>138</b>	W019	April	RA080	18.8	2.7	14.6	99.2	41	6	92
<b>139</b>	Y 157	M/June	RA252	18.4	2.9	15.7	99.6	37	6	92
<b>140</b>	Y019	M/June	RA080	17.9	2.9	16.4	99.8	41	6	92
<b>141</b>	W041	April	RA060	18.8	3.0	16.1	99.6	40	6	91
<b>142</b>	G040	M/June	GP891	19.0	2.5	13.3	99.8	34	5	93

PEN	TAG	AGE mths	SIRE	MIC	S.D.	C.V.	C.F.	EMD	FAT	WGT
<b>143</b>	Y156	M/June	RA252	18.7	2.9	15.3	99.6	38	6	97
<b>144</b>	W107	April	RA003	19.8	2.8	14.2	99.6	37	7	96
<b>145</b>	Y119	M/June	RA252	18.7	2.8	15.0	99.4	37	6	97
<b>146</b>	Y327	M/June	RLS	18.8	3.0	15.9	99.6	40	6	99
<b>147</b>	W099	April	GP897	19.3	2.9	15.3	99.4	37	7	102
<b>148</b>	W105	April	RA003	20.1	3.1	15.3	99.4	38	6	106
<b>149</b>	Y132	M/June	WP156	20.8	3.6	17.2	99.2	41	7	99
<b>150</b>	W052	April	RA060	20.6	3.0	14.3	99.8	39	7	102
<b>151</b>	Y170	M/June	RLS	20.6	2.5	12.3	99.8	39	6	101
<b>152</b>	Y054	M/June	RA026	19.3	3.1	16.1	99.4	38	6	93
<b>153</b>	Y144	M/June	RAS	18.9	2.6	13.7	100	40	7	95
<b>154</b>	B123	M/June	RA080	17.0	3.1	18.1	99.0	37	5	98

PEN	TAG	AGE mths	SIRE	MIC	S.D.	C.V.	C.F.	EMD	FAT	WGT
<b>155</b>	W021	April	RA080	19.2	3.2	16.8	99.8	39	6	88
<b>156</b>	W004	April	RA080	18.5	2.4	13.0	99.8	40	7	92
<b>157</b>	Y036	M/June	RA080	18.9	2.5	13.2	99.8	39	7	95
<b>158</b>	Y154	M/June	RA252	18.6	13.3	2.5	100	42	9	93
<b>159</b>	Y006	M/June	RA080	18.6	2.4	12.8	99.6	37	7	87
<b>160</b>	Y034	M/June	RA080	19.1	2.2	11.3	100	38	7	93
<b>161</b>	Y176	M/June	RLS	18.7	2.7	14.2	99.4	38	9	95
<b>162</b>	W043	April	RA060	18.8	2.5	13.3	99.8	43	6	96
<b>163</b>	W070	April	WP 8	20.1	3.1	15.4	99.4	36	7	90
<b>164</b>	Y174	M/June	RLS	17.8	2.5	13.9	99.4	39	7	92
<b>165</b>	W053	April	RA060	19.0	2.8	14.7	99.8	35	6	99
<b>166</b>	Y009	M/June	RA080	18.6	3.2	17.2	99.6	40	7	104



4363 EMU FLAT RD., SENIOR BORDERTOWN S.A.

RAM SALE BEGINS AT 1PM & LUNCH IS PROVIDED

ALL RAMS REGULATION AUTUMN SHORN - March 2016

DISPLAYED WITH

CURRENT WOOL TESTS, WEIGHT, EYE MUSCLE & FAT SCORES

*NOTE DIFFERENT AGES OF RAMS*

Ridgway Advance policy is to retain 50% semen rights on all rams sold

